

Model “BS” Stuffing Boxes

Wellhead Systems Inc. (WSI) continues to develop effective and efficient product solutions to support the oil and gas industry. Reduce cost and effort while increasing productivity

The WSI Model “BS” stuffing boxes reduces cost and effort associated with bolt adjustments, corrosion and replacements. The design ensures even packing adjustment EVERY time, increasing packing life while reducing maintenance efforts, allowing more efficient use of personnel time.

Specifications:

- BSSP (2”, 2 ½”, 3”)
- BSDP (2”, 2 ½”, 3”)
- BSTB (2”, 2 ½”)
- 1” through 1-3/4” polish rod sizes
- Available in corrosion resistant coating
- Pressure ratings of 1500, 3K & 5K PSI**
- BSDP available in BTM flange connection
- BS-ELUG & ECSS shut down system available
- Flapper Valve Assembly available
- Spanner wrench available with lug caps

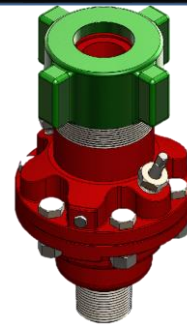
BSSP



BSTB



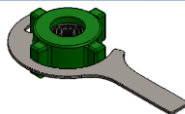
BSDP



BS-ELUG



SPANNER



“Customer Corner”

- Tired of adjusting and replacing bolts? A single threaded cap distributes even packing compression and adjustment
- Full size inverted cone packing in primary chamber provides a pressurized seal and increased wear life
- Simplicity of design and unique engagement of packing, reduces packing replacement costs and time
- Protection of packing when stacking out rod string
- Standard brass alignment ring reduces wear effects on polish rod
- Standard split rings on top follower and alignment ring reducing maintenance time and cost